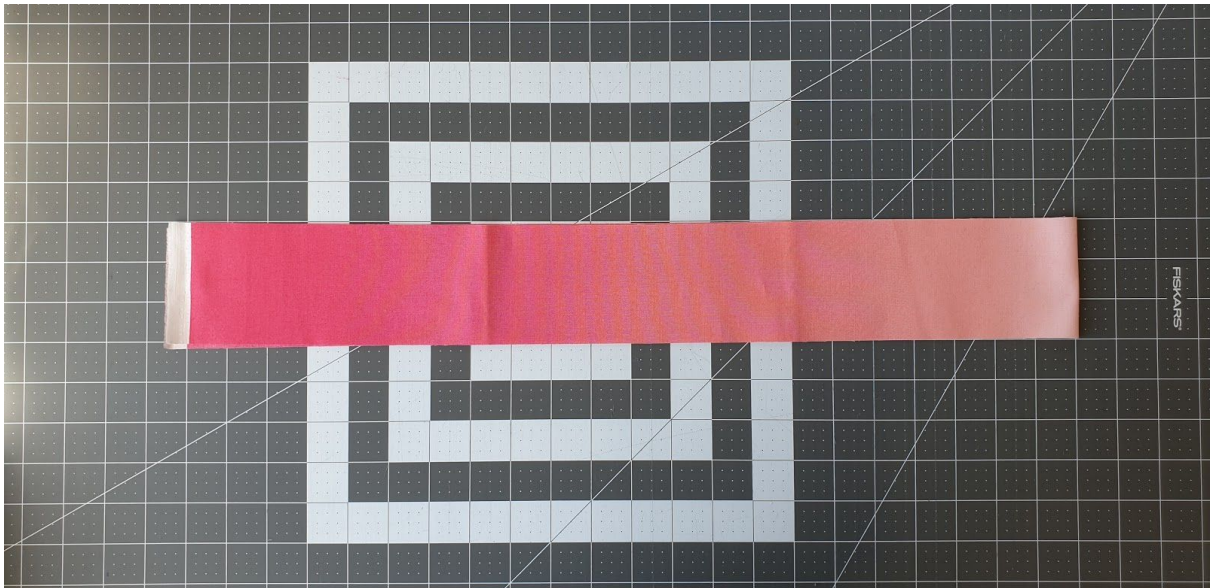


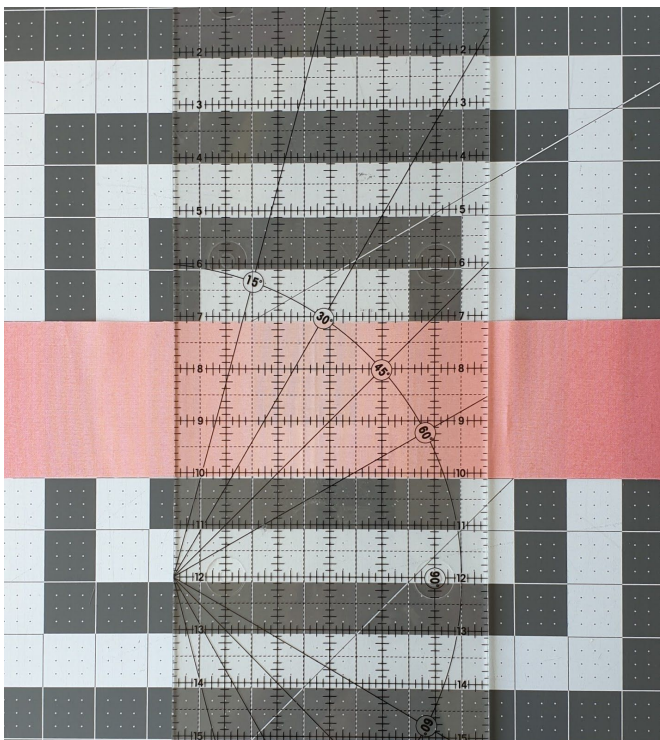
Mythos Satterwhite V and Co Ombre cutting instructions

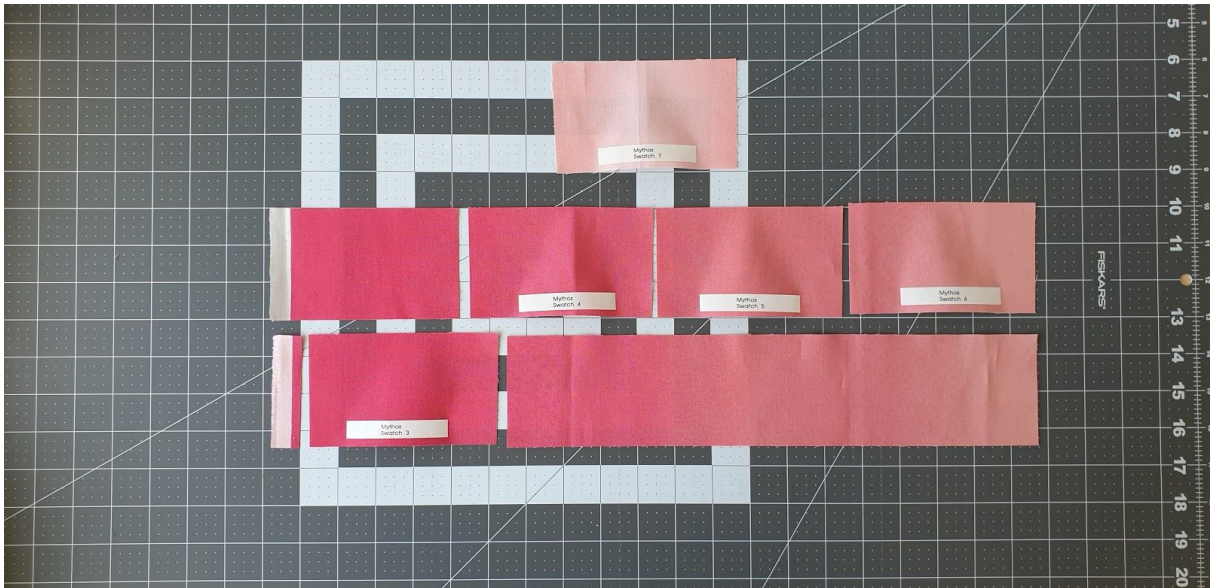
Make a swatch

Cut a strip WOF



Open it out to the full width. From the centre of the full width open strip place your ruler on the 2.5" line and cut a 5" slice. This will be Swatch 7 or the lightest fabric in your swatch.

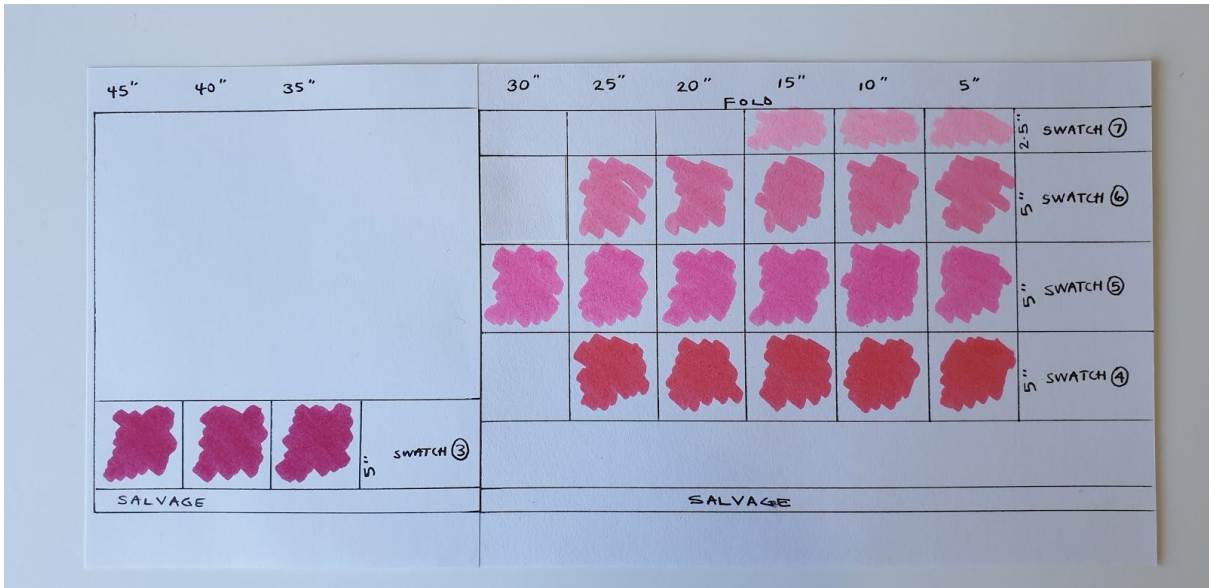




Following the picture take three more 5" slices Swatch 6, Swatch 5, and Swatch 4 from one of the remaining halves of the strip. Take one 5" slice from the darkest edge (against the salvage) from the other half of the strip, Swatch 3.



Cut Ombre fabric as per picture.



For Swatch 2 I used a darker pink for the corners and an off white for the centre from a left-over charm pack but you could use Swatch 7 or Swatch 3 or mix it up and add a completely different colour.